

avintage



TAILOR **MADE**



LIVE YOUR PASSION BY OUR SIDE

SINCE 1994

The objective of Avintage Tailor Made, since its creation, has been to captivate clients by making the wine cellar an essential element in the decor of a restaurant or an interior.

In 2024, the name change from Provintech to Avintage Tailor Made marked a strategic evolution for the Frio Group, merging two complementary high-end areas of expertise under a single brand. The goal: to harness talent, know-how, and creativity to enable Avintage Tailor Made to collaborate with renowned names in architecture and design, innovating and offering personalized solutions that are aesthetic, reliable, and of exceptional quality.

From the first contact to the final installation, Avintage Tailor Made ensures you have a single point of contact who will advise and successfully bring your project to life.

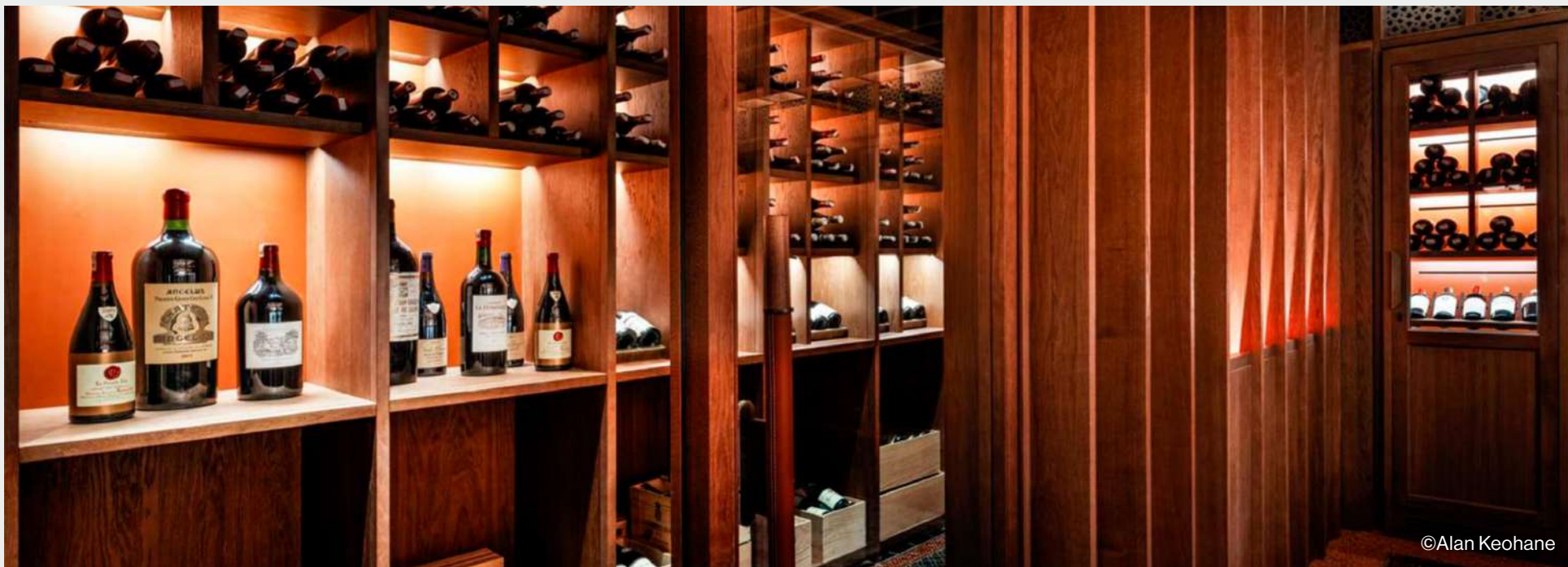
INFORMATION CONTACT

400 rue du Marché Rollay
94500 Champigny sur Marne
T. 01 49 76 31 19 / F. 01 42 83 86 45
contact@avintagesurmesure.com

Table of CONTENTS

	PAGE
Projects	05
Ranges	19
Finishes	21
Shelves	23
References	25





©Alan Keohane



LA MAMOUNIA PALACE

Avintage Tailor Made / Jouin – Sanjit Manku

A custom-made wine cellar, capable of holding up to 2,000 bottles, was designed for the La Mamounia palace, integrated into a private tasting room. Made of oak wood with an iconic orange backdrop, it combines elegance and functionality with inclined shelves to showcase wines and dedicated storage areas. The entire unit, in the Prestige range, reflects the luxury and refinement of the venue.



PRIVATE MANSION

Hélène & Olivier Lempereur

A custom-made wine cellar, capable of holding up to 340 bottles, was designed for a private mansion in Paris, serving as a divider between the kitchen and the dining room while maintaining transparency and brightness. Composed of two glass wine cellars with mirror-polished stainless steel shelves and chrome accents, it combines optimal preservation with elegant design.



The image shows the interior of La Rotonde Restaurant. In the foreground, two tables are set with white tablecloths, glassware, and cutlery. In the background, a long bar with a dark wood finish and a large, illuminated wine cellar display case filled with bottles are visible. The walls are dark and feature several framed historical photographs. The lighting is warm and ambient.

LA ROTONDE RESTAURANT

Avintage Tailor Made

Avintage Tailor Made designed a Prestige wine cellar for La Rotonde in sandblasted blue-painted stainless steel, capable of storing 216 bottles. Positioned between the bar and the dining area, it offers a three-sided view and transverse shelves for an elegant design. This creation ensures optimal wine preservation while enhancing their presentation.







PRIVATE RESIDENCE

Imao Design

A custom-made wine cellar with a capacity of 390 bottles, crafted in black stainless steel from the Prestige range, was created for an apartment in Paris 8. Positioned between the private lounge and the living area, it combines elegance and functionality with inclined shelves, a central presentation shelf, and transverse shelves at the top. Equipped with three doors and a single-temperature zone, it enhances the display of bottles while optimizing storage.

LES 5 CODETS HOTEL

Jean-Philippe Nuel

A custom-made wine cellar with a capacity of 234 bottles, from the Prestige range, was designed for the Hôtel Le 5 Codets to enhance the restaurant space. Composed of two offset cellars with two glass sides, it features transverse shelves painted in brown to match the gray-brown stainless steel structure. This creation combines elegant design and functionality to create a unique space.







PULLMAN BIRROTECA HOTEL

Christophe Pillet

The custom beer cellar at the PULLMAN BIRROTECA hotel is an impressive creation that can hold over 800 bottles.

It features a premium design with a sandblasted brown-painted stainless steel finish. The water-cooled refrigeration system offers enhanced energy efficiency and reduced noise compared to air-cooled systems. The beer cellar includes three-tier shelves with individual baskets called "wine by one" for individual display. Each showcase is equipped with three doors, ensuring easy and convenient beer selection.





CHÂTEAU D'ESCLANS

Avintage Tailor Made

Avintage Tailor Made designed two wine cellars for Château d'Esclans, featuring black lacquered stainless steel finishes and LED lighting, combining design and functionality. These cellars offer an adjustable temperature range from 8 to 19°C and accommodations for large-format bottles, showcasing the prestigious rosé selections.





WINE SPACES



TAILOR-MADE SOLUTIONS FOR ENTHUSIASTS AND COLLECTORS

Our "Wine Spaces" category for wine cellars is designed to provide a tailored experience for preserving and showcasing your exceptional wines.

We offer two types of creations to meet your needs, whether you're looking for an intimate space or a large wine cellar:

Small Wine Space: This refrigerated wine cellar of approximately 10 m² is perfect for those seeking a combination of elegance and practicality. It features refined shelving and LED lighting systems, providing the ideal setting to showcase your bottles while preserving them under optimal conditions.

Large Wine Space: For passionate collectors or serious wine enthusiasts, we offer a refrigerated wine cellar of over 20 m². This spacious area includes shelving, sophisticated LED lighting, and a central island, offering not only a large storage capacity but also a prestigious space for sharing and tasting your wines.

Whether to enhance your collection or create a dedicated space for wine preservation and tasting, our wine spaces are designed to meet the highest standards.

WINE CELLARS



ELEGANCE, FUNCTIONALITY, AND HIGH-END CUSTOMIZATION

Our wine cellar category is specially designed to meet the expectations of wine enthusiasts and lovers of refined design. These wine cabinets combine aesthetics and functionality while preserving your bottles under optimal conditions.

We offer two types of creations:

Classic Wine Cellars: For standard dimensions, with a height between 2200 mm and 2500 mm, a depth of 550 to 600 mm, and a door width of up to 1000 mm, we provide elegant and customized solutions. Each door is carefully crafted to meet your style and practicality requirements.

Premium Personalization and Options: For a higher level of customization, we offer finishes in exceptional materials such as brass, bronze, special coatings, or rare woods. These options add a unique and luxurious touch to your wine cabinet, enhancing your storage space.

With our wine cellars, every detail is designed to provide a tailor-made experience, combining beauty, practicality, and optimal preservation.





FINISHES



SOLID WOOD

- French Oak
- American Walnut
- Black Stained
- etc...

Colors



MIRROR-POLISHED STAINLESS STEEL

- Stainless Steel

Colors



WOOD VENEER

- Ash
- Birch
- Oak
- Walnut
- etc...

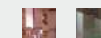
Colors



BRUSHED STAINLESS STEEL

- Hammered
- Rose Gold
- etc...

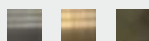
Colors



BRASS

- Golden
- Medium
- Dark Bronze Patina

Colors

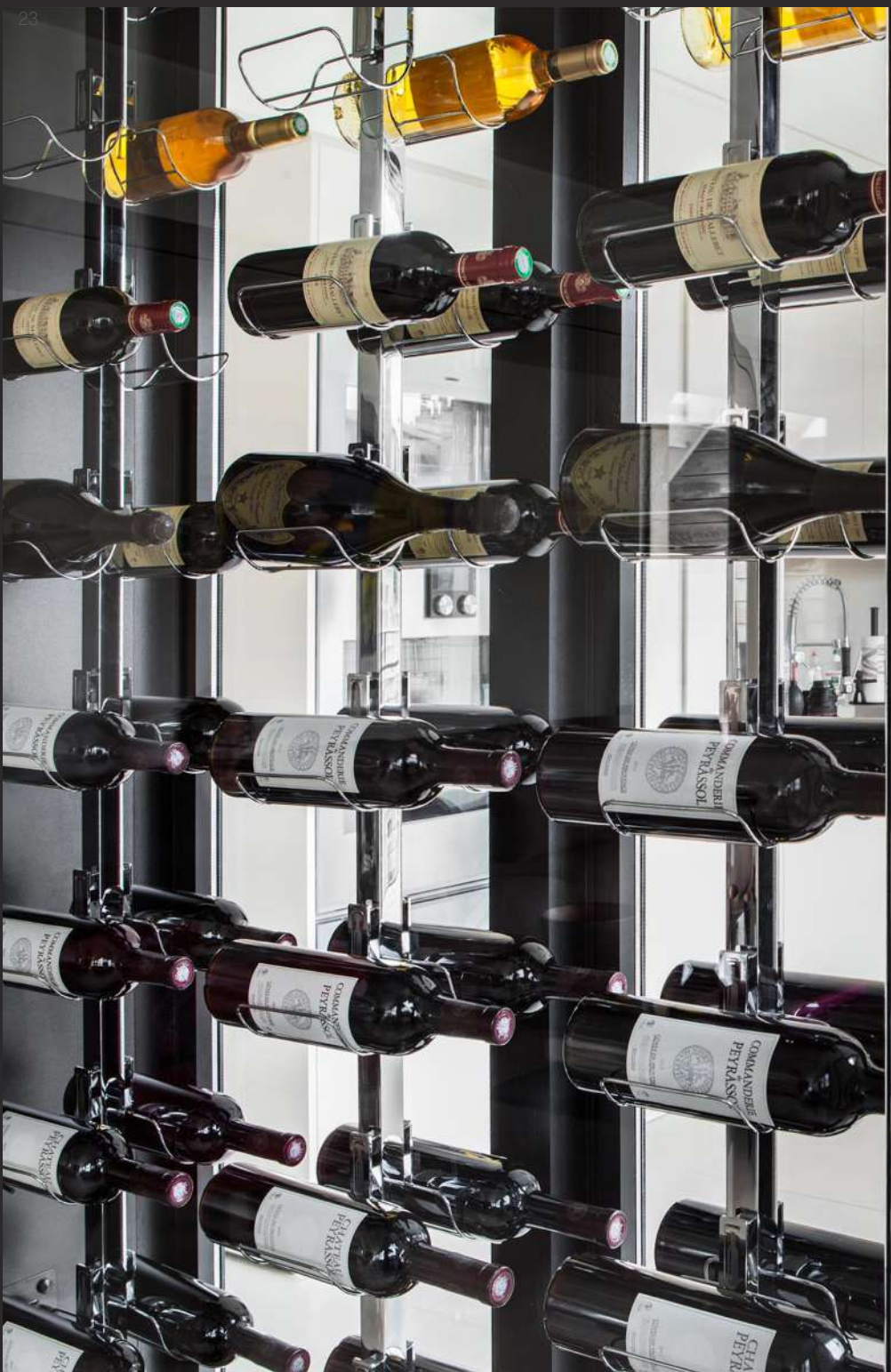


LACQUERING

- Epoxy Paint on Stainless Steel Base
- RAL Color of Your Choice (glossy, matte, textured...)

Colors





SHELVES



INCLINED

Ideal for showcasing bottles, it features an elegant inclination that ensures optimal visibility of the labels.

Colors



TRANSVERSE

Arranged horizontally, it maximizes storage while providing clear and practical organization.

Colors



WINE BY ONE

Designed for individual tasting, this shelf is crafted for easy access to one bottle at a time.

Colors



SLIDING

Allows easy access to bottles with its sliding mechanism, perfect for practical and modern storage.

Colors



RACK / CROSS DIVIDERS

A classic and modular solution, ideal for organizing bottles by type or collection.

Colors



MIXED LAYOUT

Combines several types of shelves for a perfect balance between presentation, storage, and accessibility.

Colors



OUR REFERENCES

THESE ESTABLISHMENTS HAVE PLACED THEIR TRUST IN US:

- Pullman Montparnasse 1 and 2, Paris
- Durand Dupont, Neuilly-sur-Seine
- Maison de l'Amérique Latine, Paris
- La Mascotte, Paris
- Champs Élysées, Paris
- Le Violon d'Ingres, Paris
- Le Bouche à Oreille, Boutervilliers
- La Rotonde, Aix-en-Provence
- Le Pario, Paris
- Narcisse Blanc, Paris
- Dessirier, Paris
- Les Cocottes, Paris
- Les 110 de Taillevent, Paris
- Le 5 Codets, Paris
- La Truffe Noire, Paris
- La Mainaz, Paris
- Beef & Co, Metz
- Buddha Bar, Paris
- La Villa Haussmann, Paris
- Pullman Birroteca
- Les Fables de la Fontaine, Paris
- La Cloche, Dijon







WWW.AVINTAGESURMESURE.COM